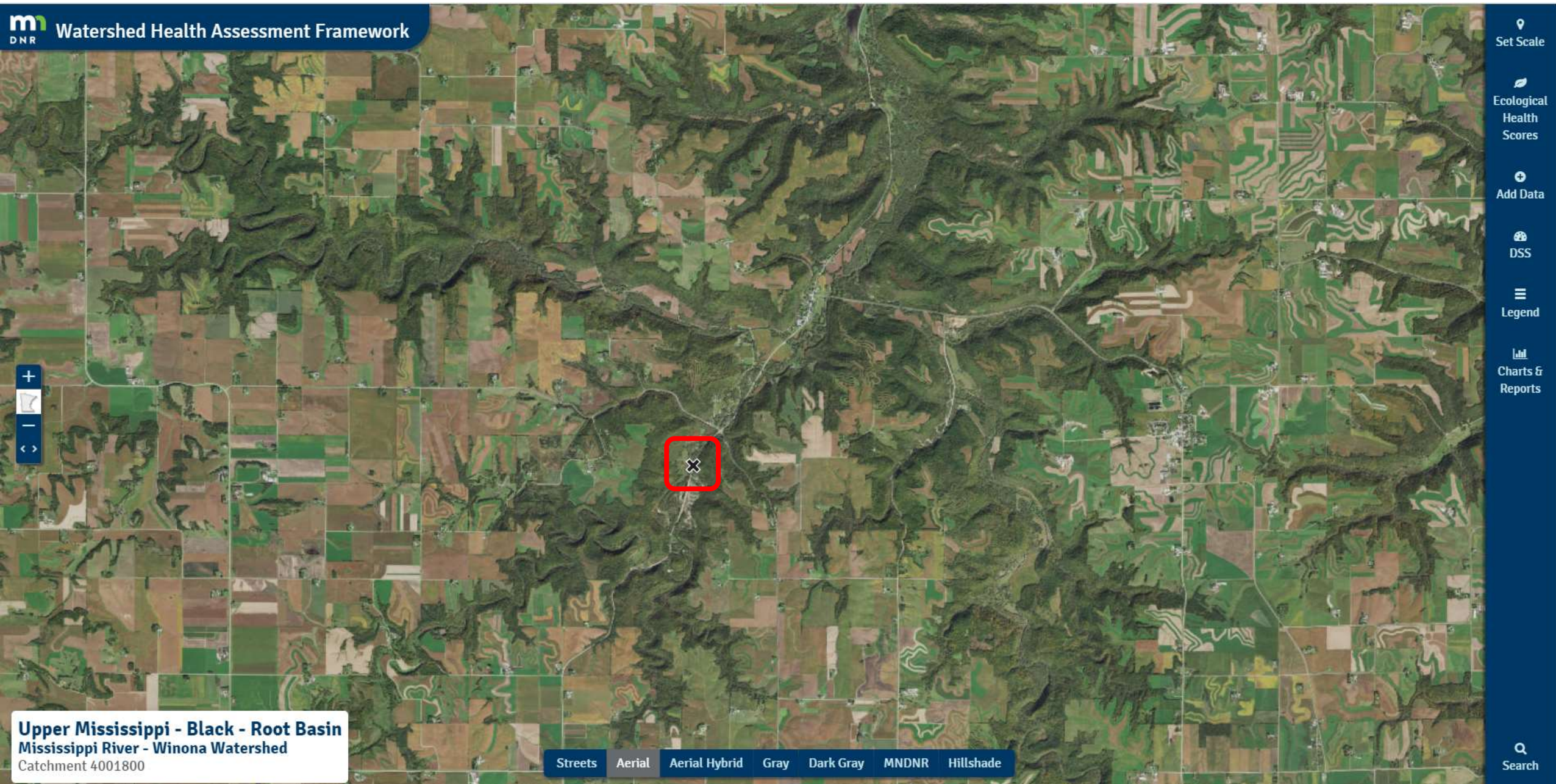


Whitewater State Park

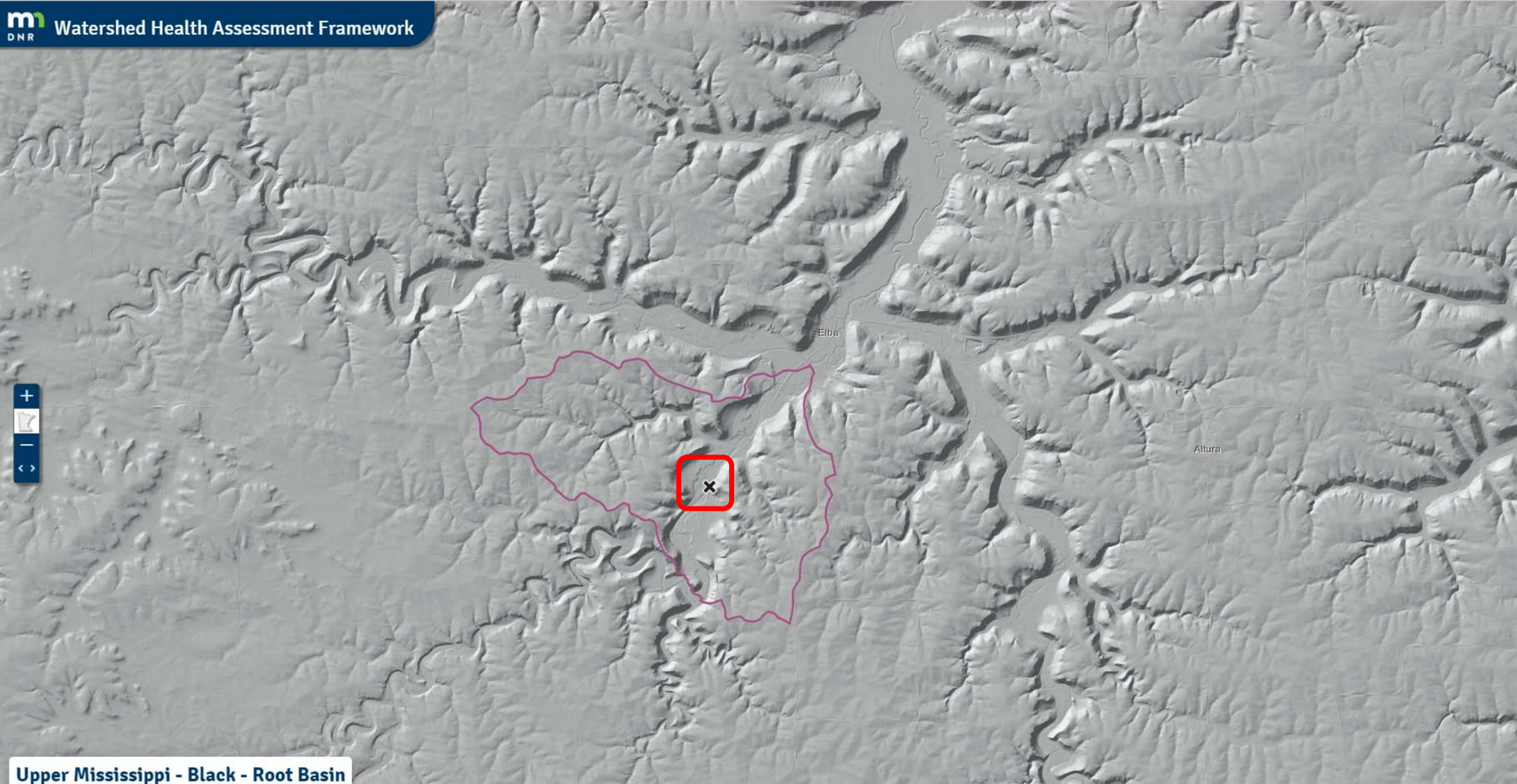


- Set Scale
- Ecological Health Scores
- Add Data
- DSS
- Legend
- Charts & Reports
- Search

Upper Mississippi - Black - Root Basin
Mississippi River - Winona Watershed
Catchment 4001800

- Streets
- Aerial
- Aerial Hybrid
- Gray
- Dark Gray
- MNDNR
- Hillshade

Whitewater State Park



- Set Scale
- Ecological Health Scores
- Add Data
- DSS
- Legend
- Charts & Reports

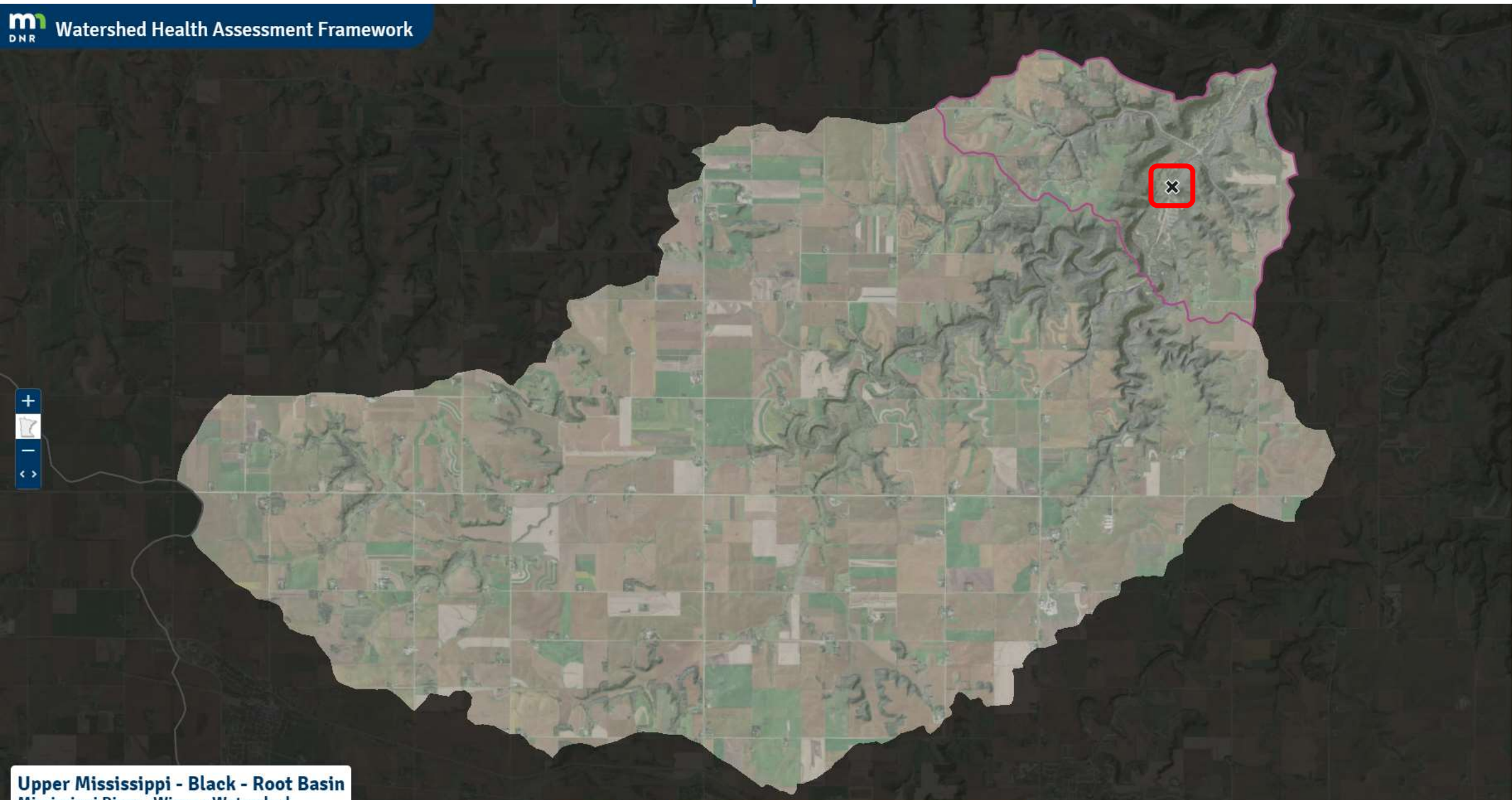


Upper Mississippi - Black - Root Basin
Mississippi River - Winona Watershed
Catchment 4001800

- Streets
- Aerial
- Aerial Hybrid
- Gray
- Dark Gray
- MNDNR
- Hillshade

Search

Whitewater State Park – Upstream Watershed



Set Scale

Ecological Health Scores

Add Data

DSS

Legend

Charts & Reports

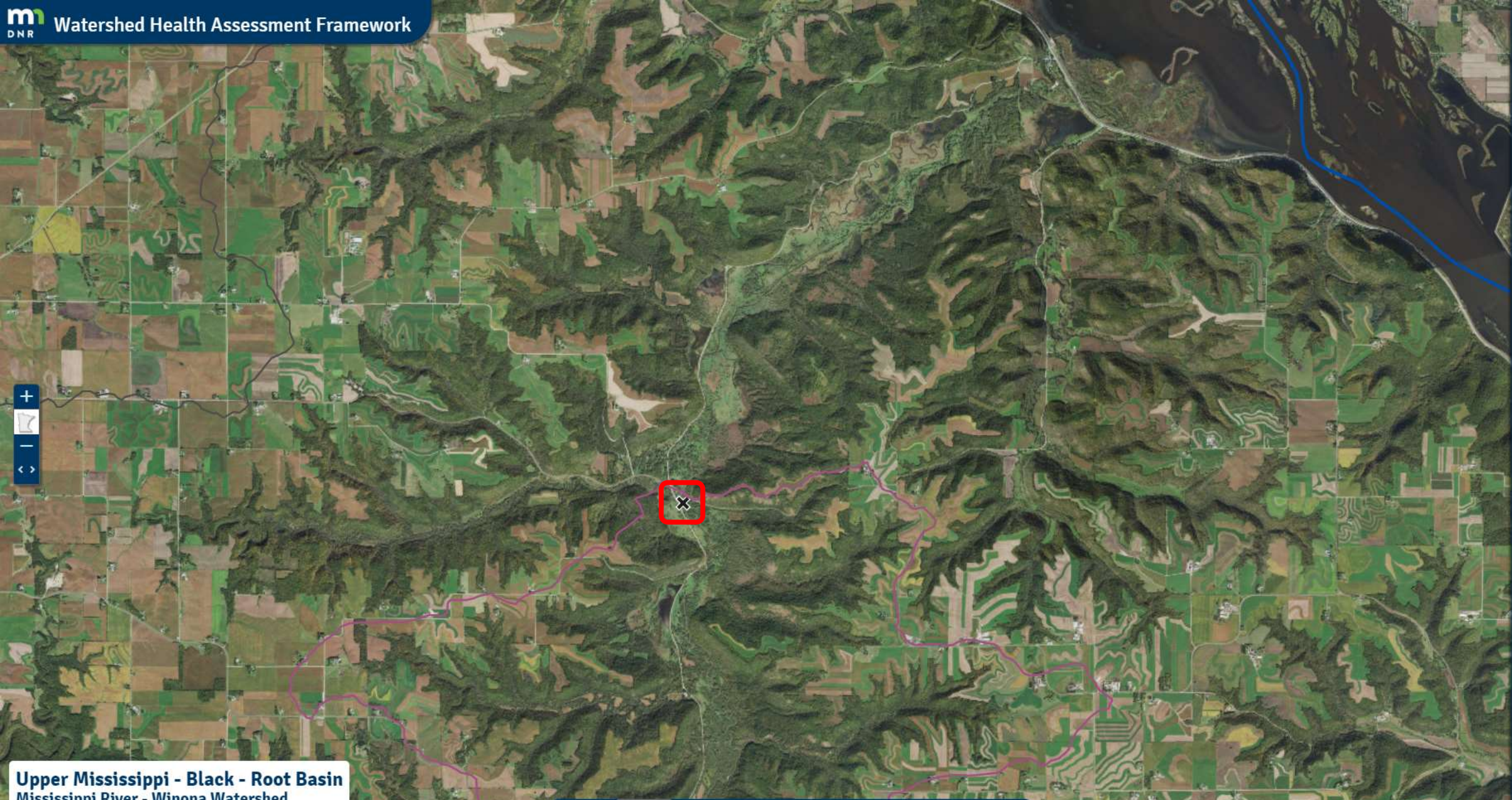


Upper Mississippi - Black - Root Basin
Mississippi River - Winona Watershed
Catchment 4001800

Streets Aerial Aerial Hybrid Gray Dark Gray MNDNR Hillshade

Search

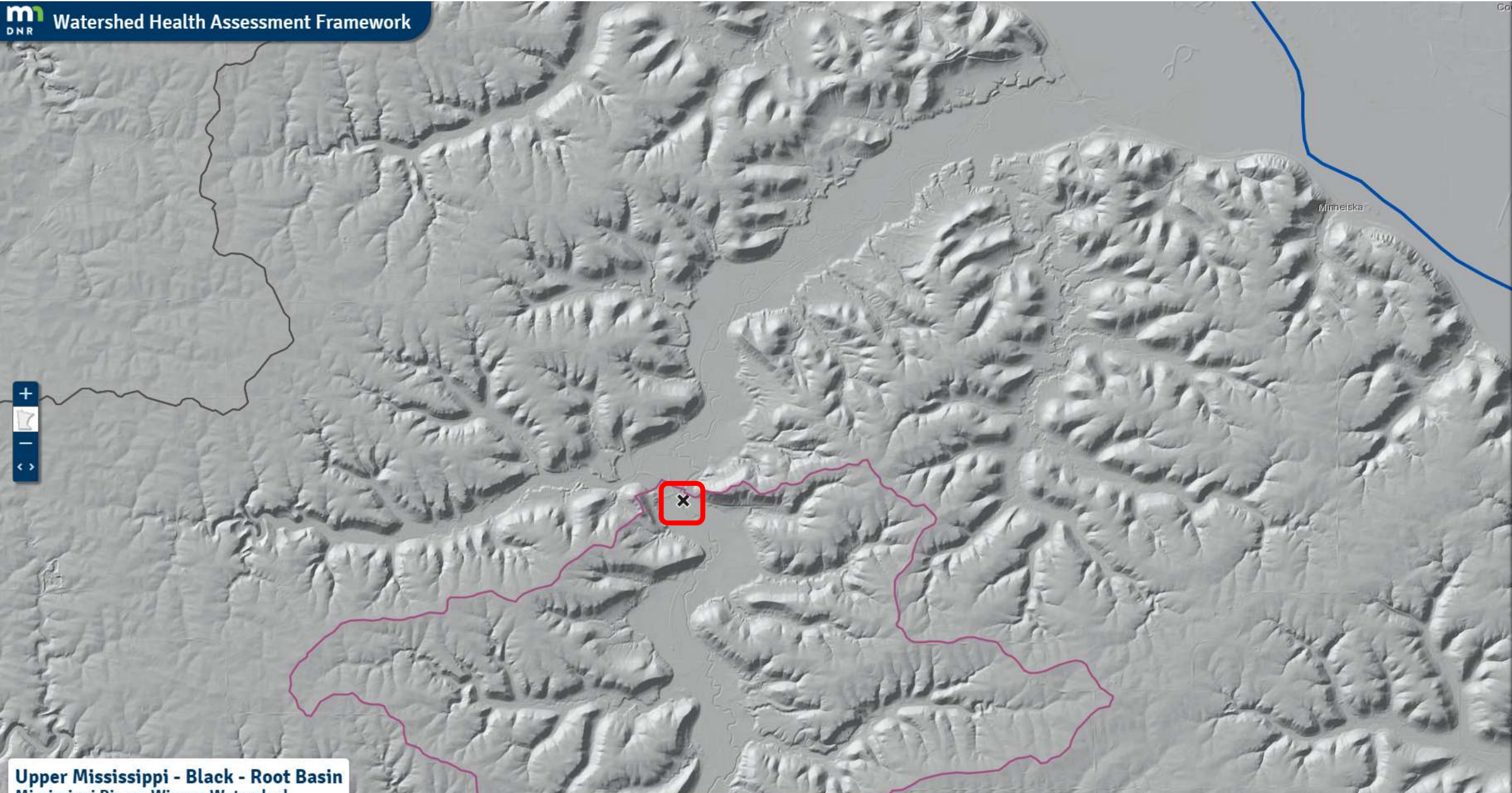
WW River Site 2



- Set Scale
- Ecological Health Scores
- Add Data
- DSS
- Legend
- Charts & Reports



Whitewater River Site 2



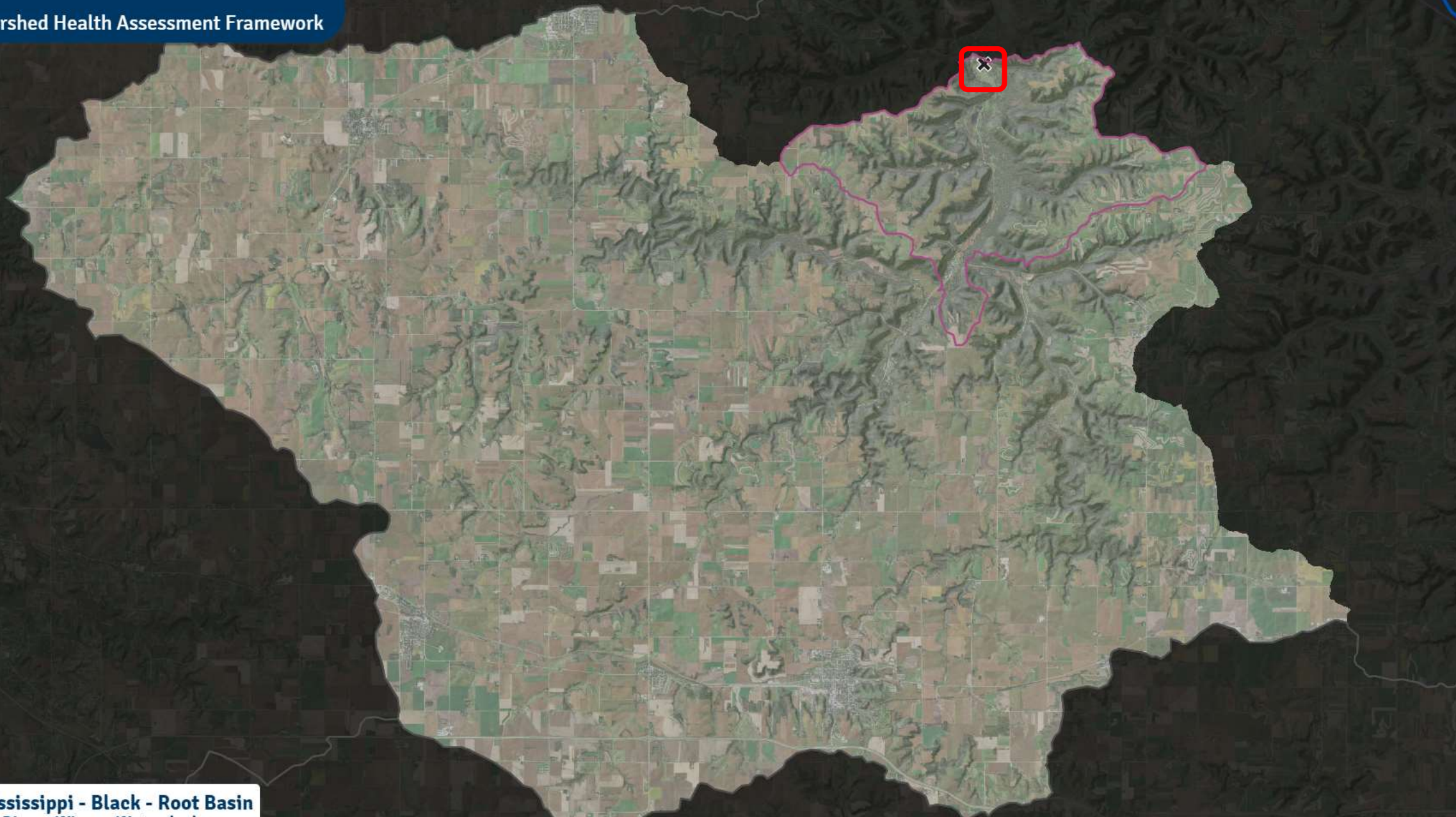
- Set Scale
- Ecological Health Scores
- Add Data
- DSS
- Legend
- Charts & Reports

Upper Mississippi - Black - Root Basin
Mississippi River - Winona Watershed
Catchment 4001601

- Streets
- Aerial
- Aerial Hybrid
- Gray
- Dark Gray
- MNDNR
- Hillshade

Search

WW River Site 2 – Upstream Watershed



-  Set Scale
-  Ecological Health Scores
-  Add Data
-  DSS
-  Legend
-  Charts & Reports






Beaver Cemetery



Set Scale

Ecological Health Scores

Add Data

DSS

Legend

Charts & Reports

Search



Streets Aerial Aerial Hybrid Gray Dark Gray MNDNR Hillshade

Upper Mississippi - Black - Root Basin
Mississippi River - Winona Watershed
Catchment 4001500

Beaver Cemetery



Set Scale

Ecological Health Scores

Add Data

DSS

Legend

Charts & Reports

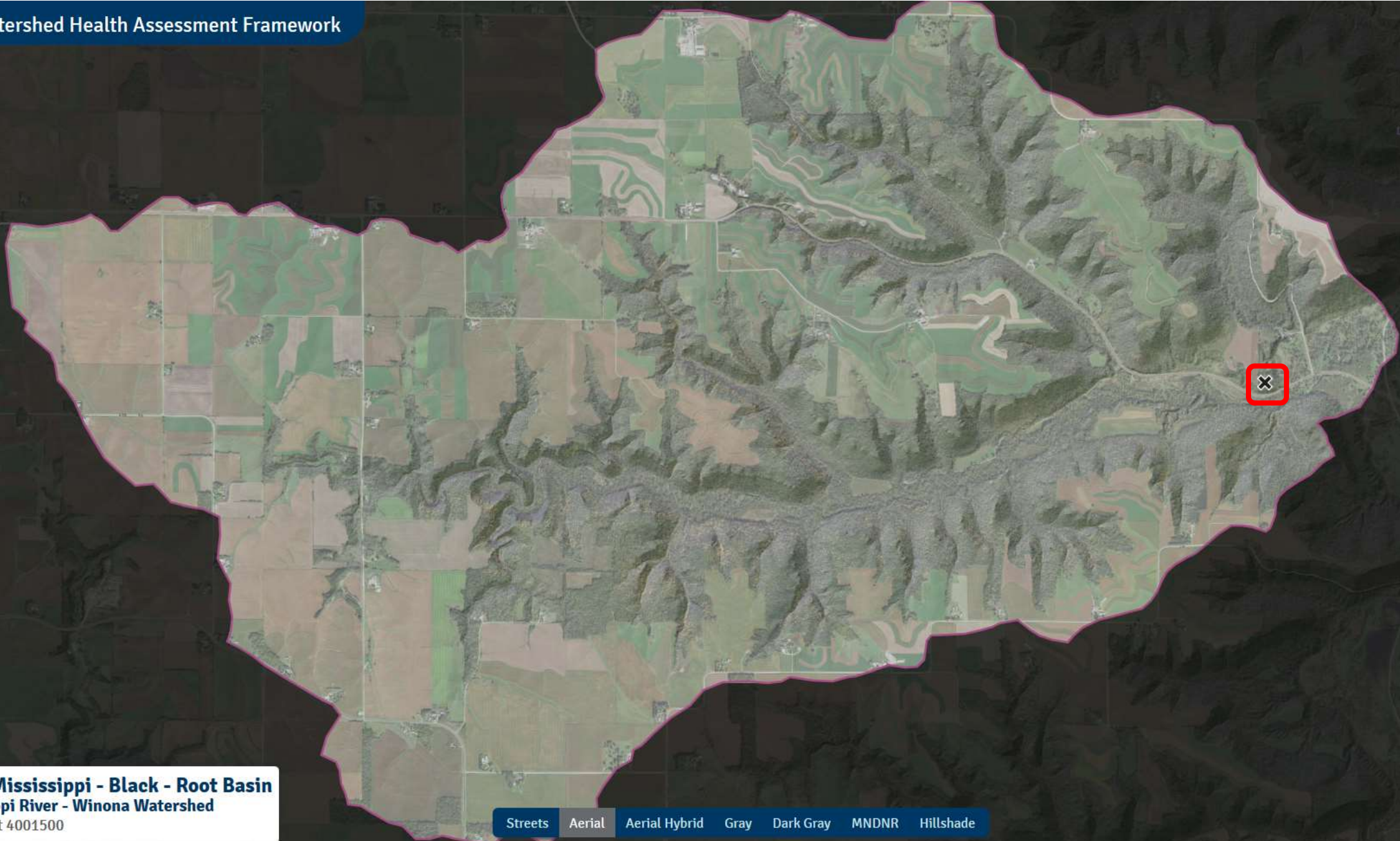
Search



Upper Mississippi - Black - Root Basin
Mississippi River - Winona Watershed
Catchment 4001500

Streets Aerial Aerial Hybrid Gray Dark Gray MNDNR Hillshade

Beaver Cemetery – Upstream Watershed



Set Scale

Ecological Health Scores

Add Data

DSS

Legend

Charts & Reports

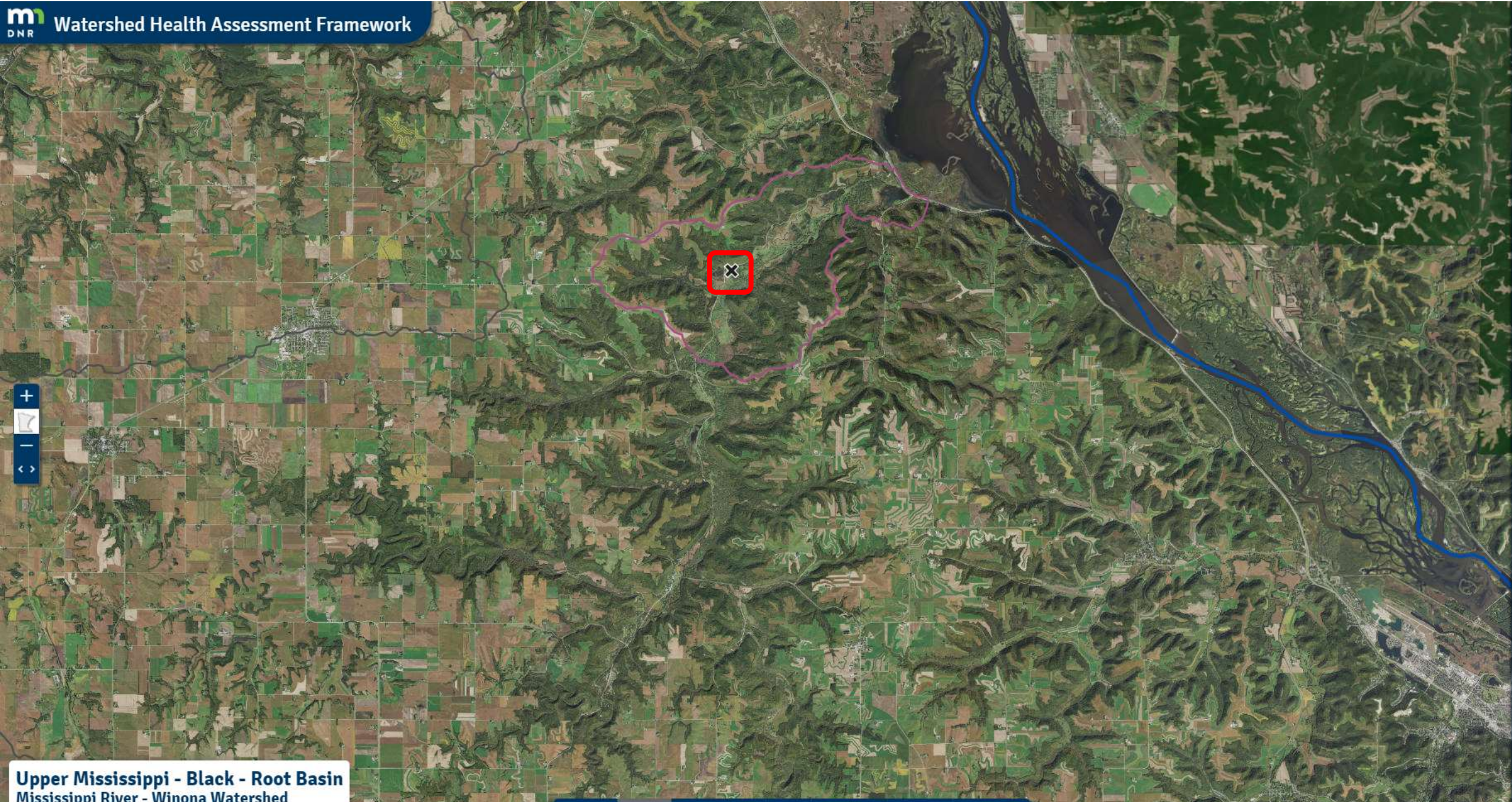
Search



Upper Mississippi - Black - Root Basin
Mississippi River - Winona Watershed
Catchment 4001500

Streets Aerial Aerial Hybrid Gray Dark Gray MNDNR Hillshade

Whitewater Overlook

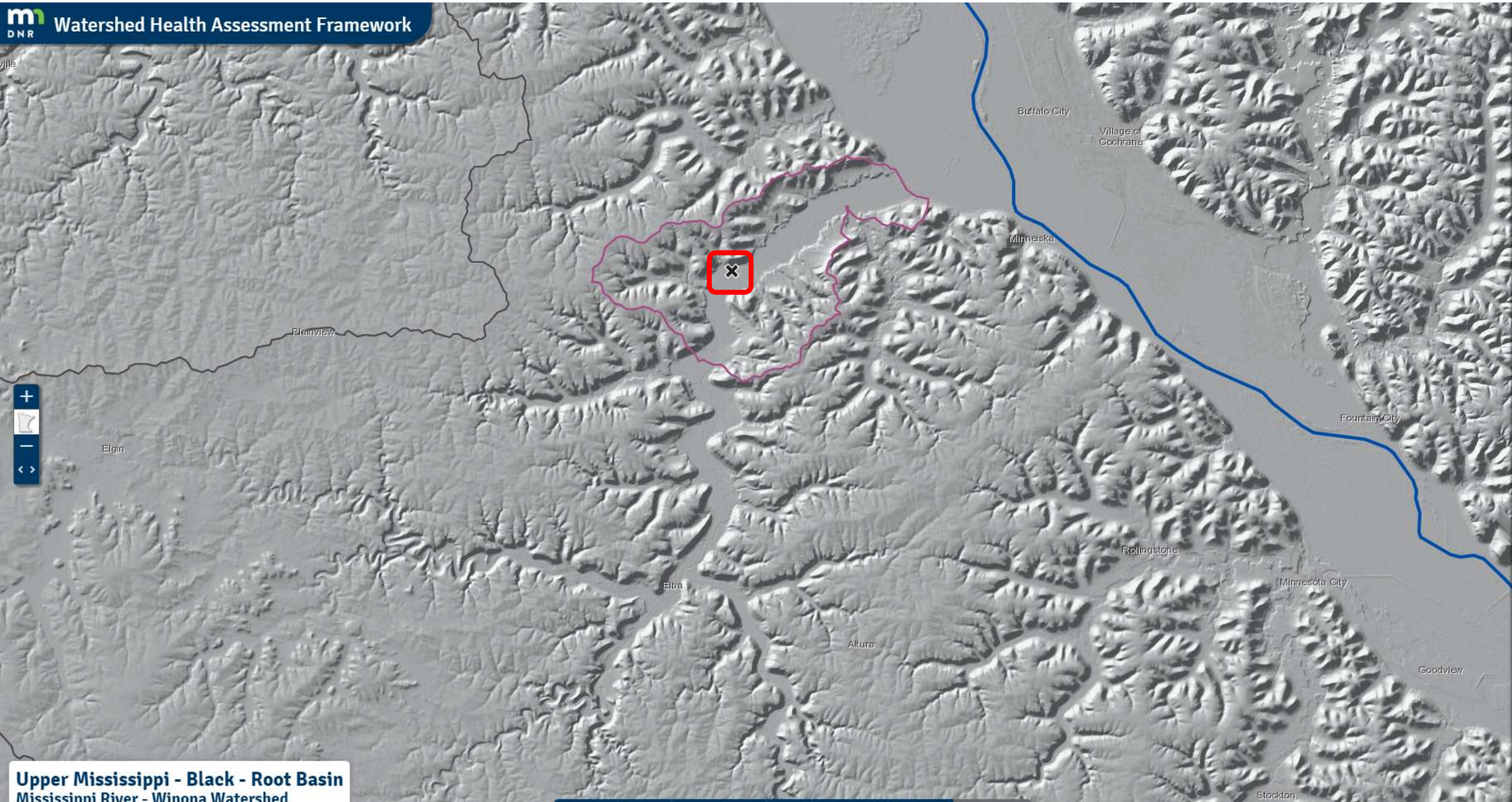


- Set Scale
- Ecological Health Scores
- Add Data
- DSS
- Legend
- Charts & Reports
- Search

Upper Mississippi - Black - Root Basin
Mississippi River - Winona Watershed
Catchment 4001300

Streets Aerial **Aerial Hybrid** Gray Dark Gray MNDNR Hillshade

Whitewater Overlook



- Set Scale
- Ecological Health Scores
- Add Data
- DSS
- Legend
- Charts & Reports
- Search

Upper Mississippi - Black - Root Basin
Mississippi River - Winona Watershed
Catchment 4001300

Streets Aerial Aerial Hybrid Gray Dark Gray MNDNR Hillshade

Whitewater Overlook – Upstream Watershed



Whitewater Field Tour Locations



WW Park – Site 1 Upstream Area



WW River –Site 2 Upstream Area

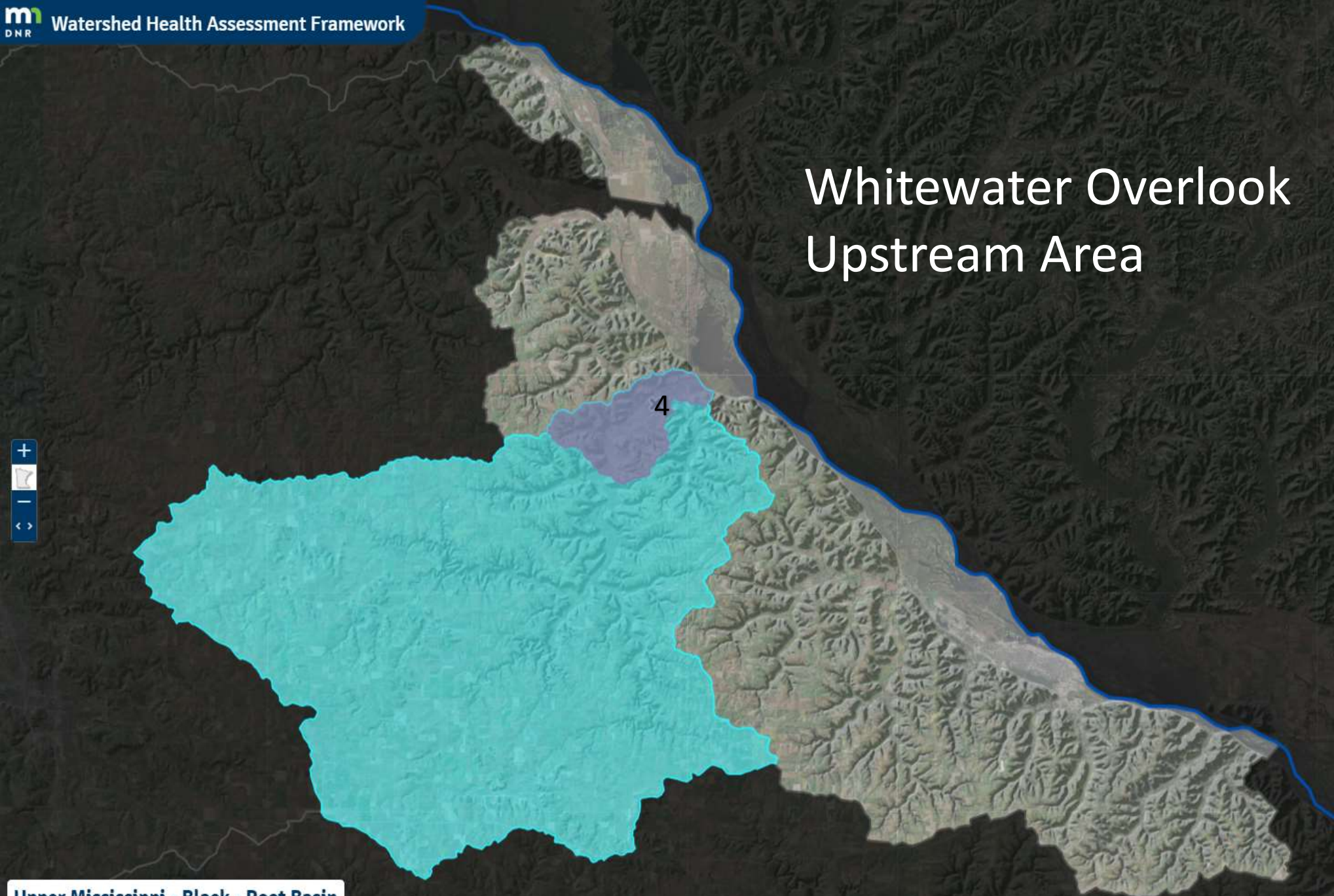


Upper Mississippi - Black - Root Basin
Mississippi River - Winona Watershed
Catchment 4001601

Whitewater Overlook Upstream Area



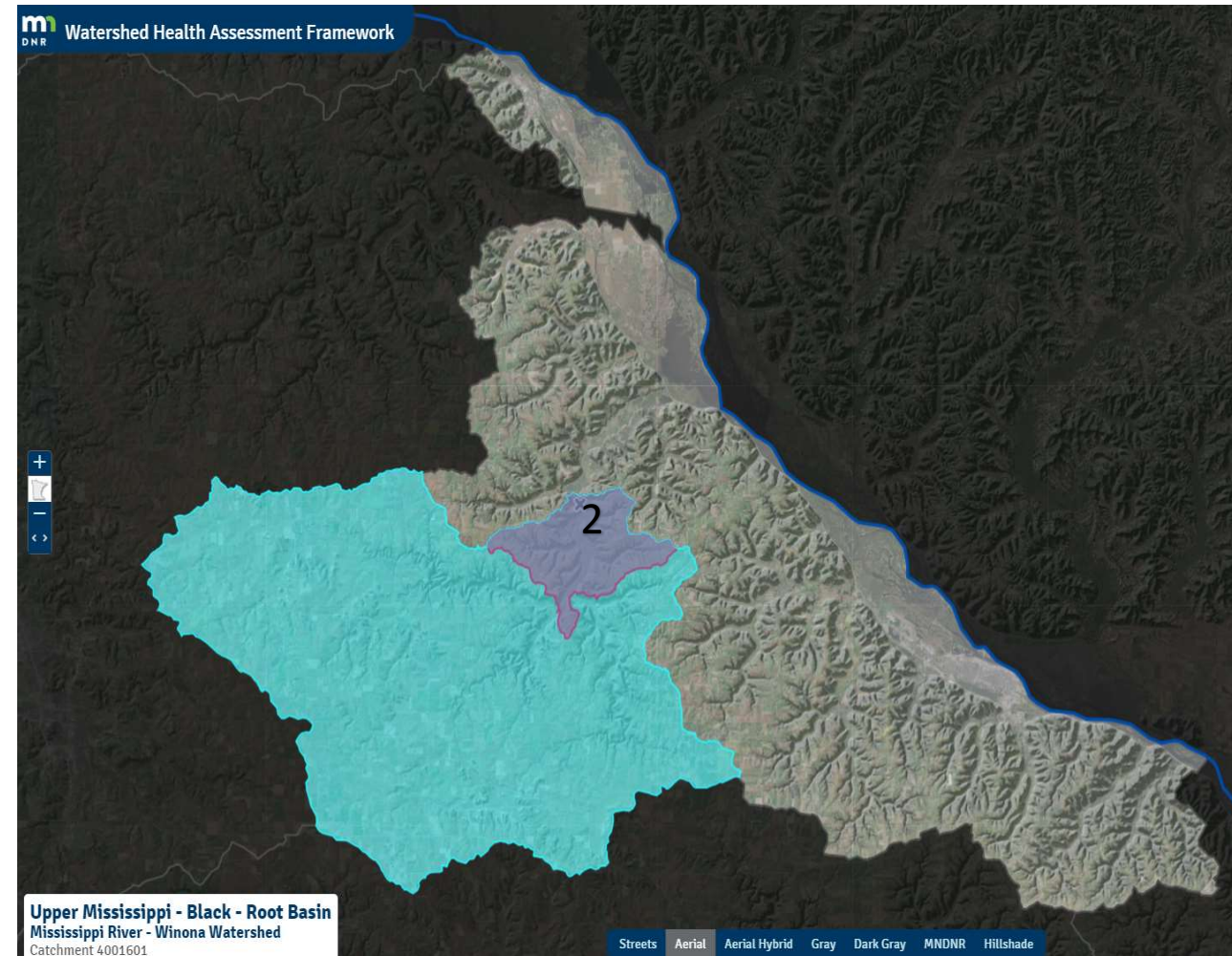
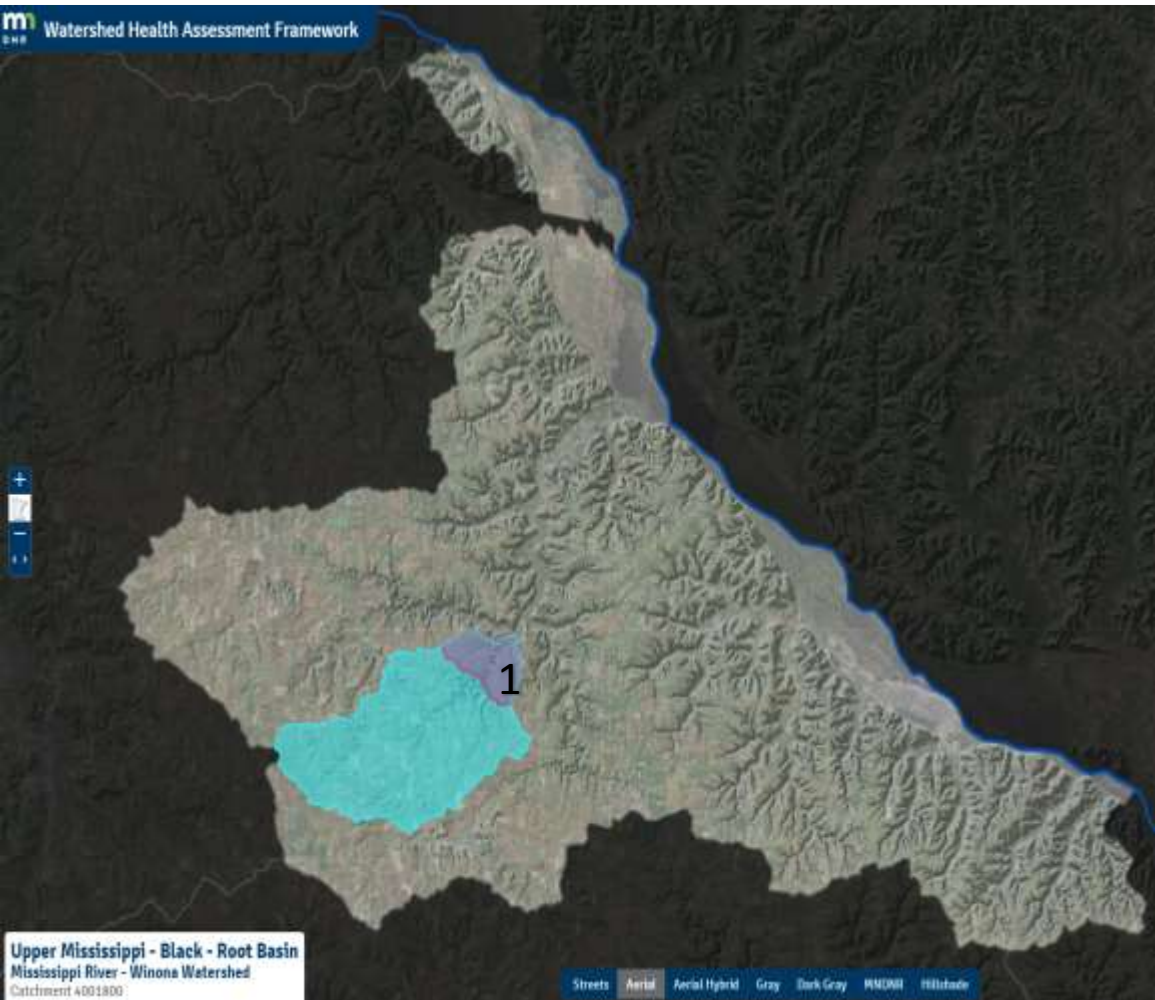
Upper Mississippi - Black - Root Basin
Mississippi River - Winona Watershed
Catchment 4001300



Beaver Cemetery Upstream Area



Compare Sampling Sites 1 and 2



Whitewater Park Site 1

Whitewater River Site 2

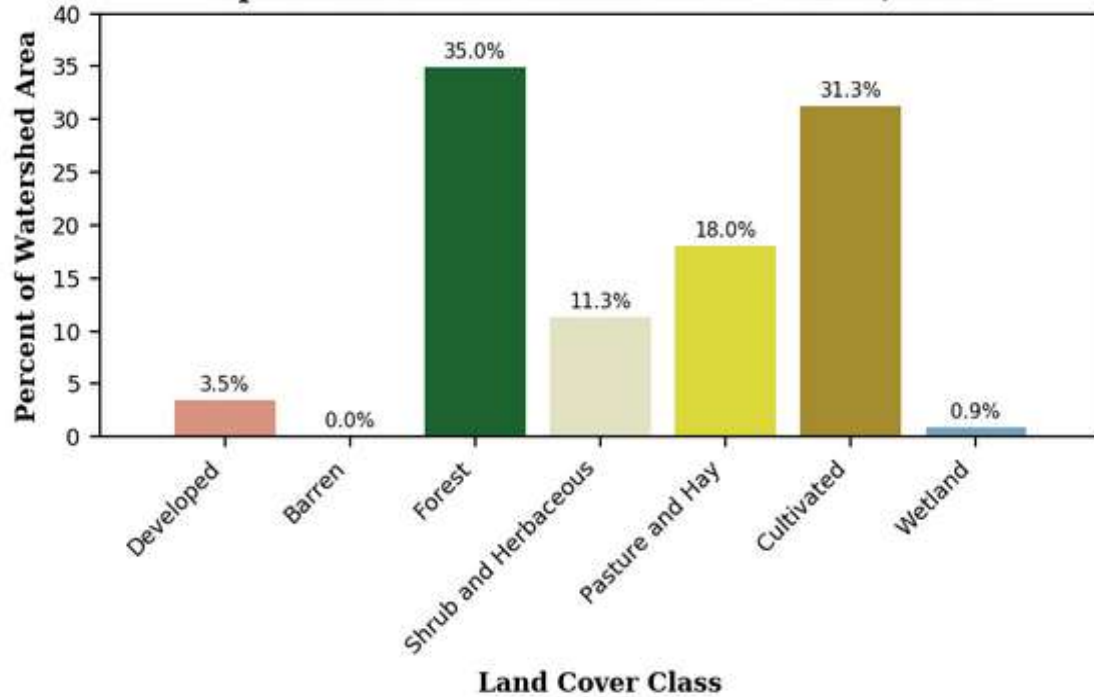
National Land Cover Database (NLCD)

National Land Cover Database (NLCD)

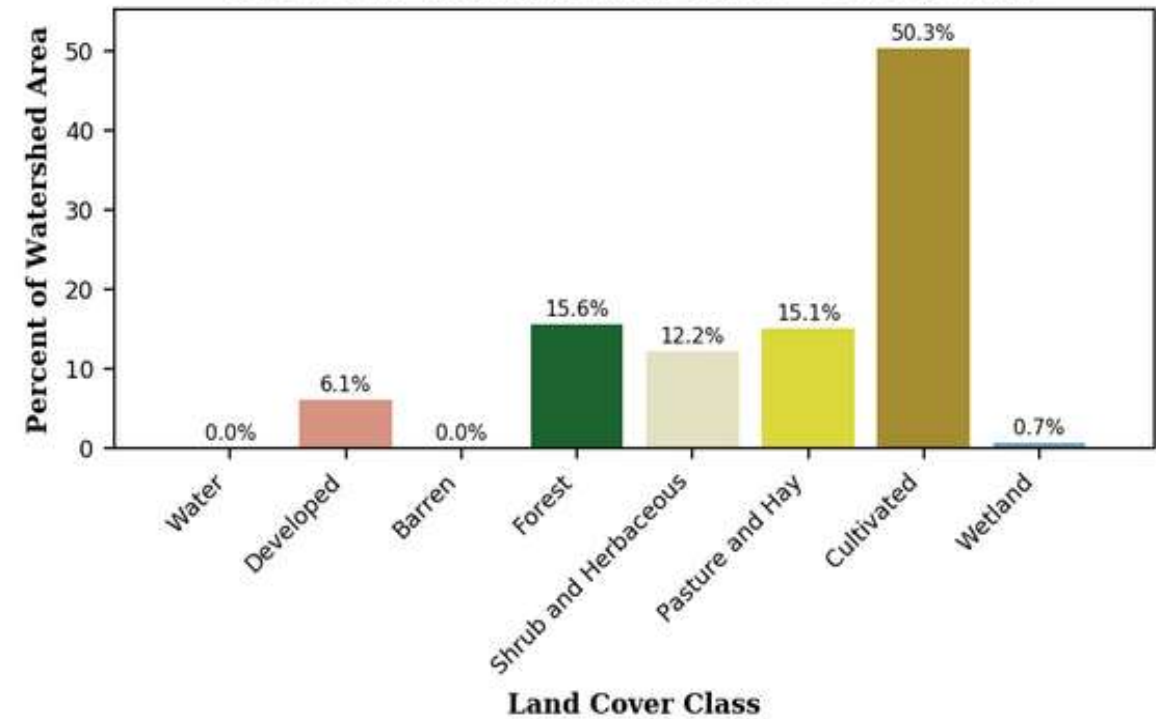
2011 2006 2001

2011 2006 2001

Upstream 4001500 Land Cover - NLCD, 2011



Upstream 4001601 Land Cover - NLCD, 2011



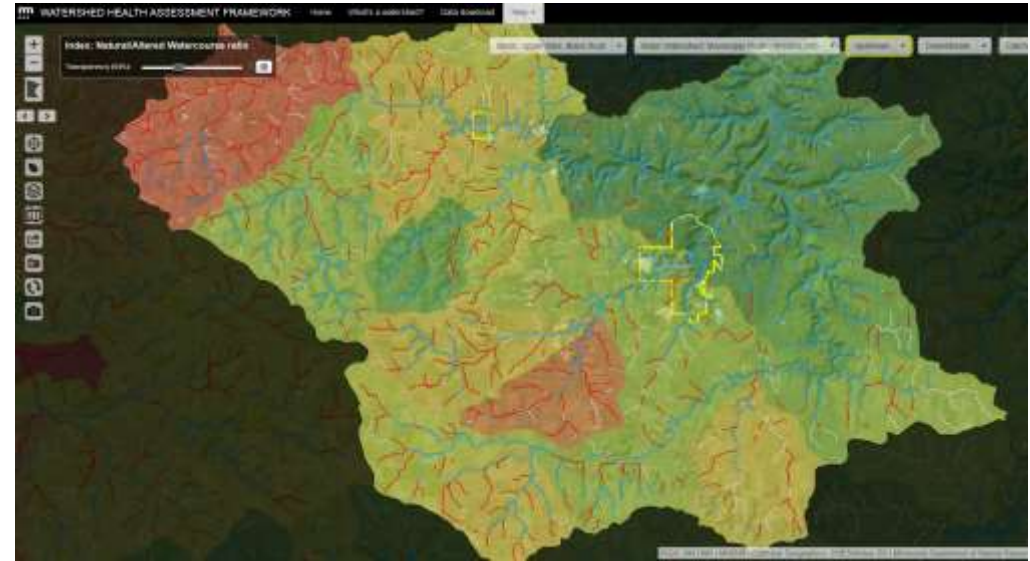
Current Land Cover – Catchment and Upstream

Current Land Cover – Catchment and Upstream

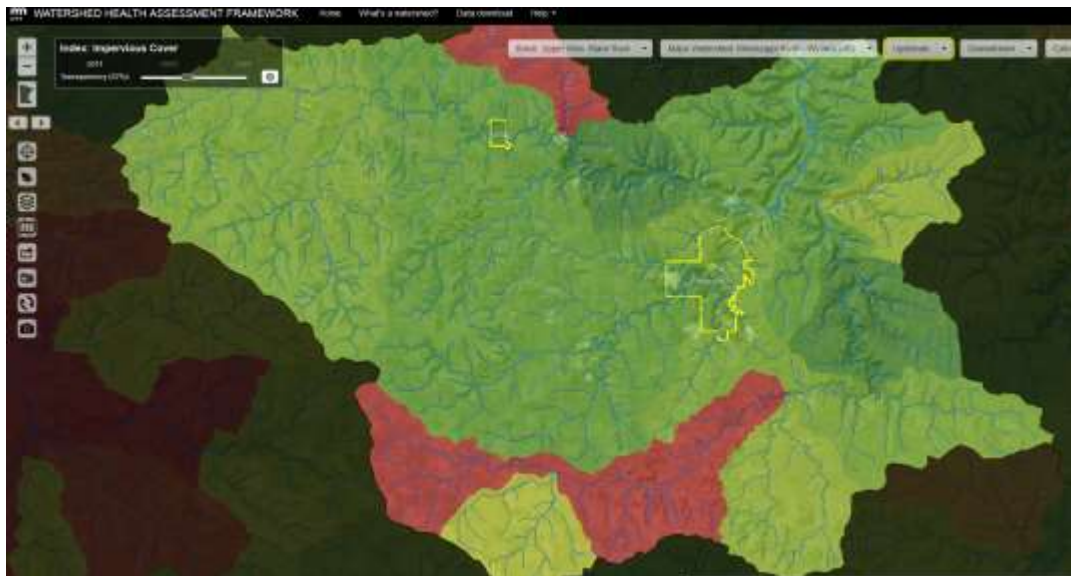
Altered Land: Perennial Vegetation



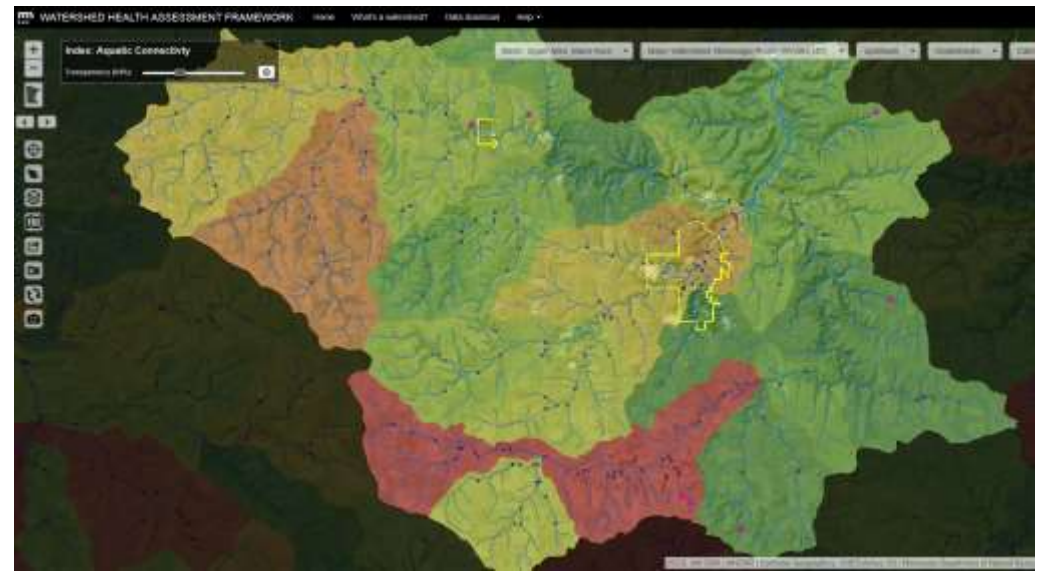
Altered Waters: Storage and delivery of water



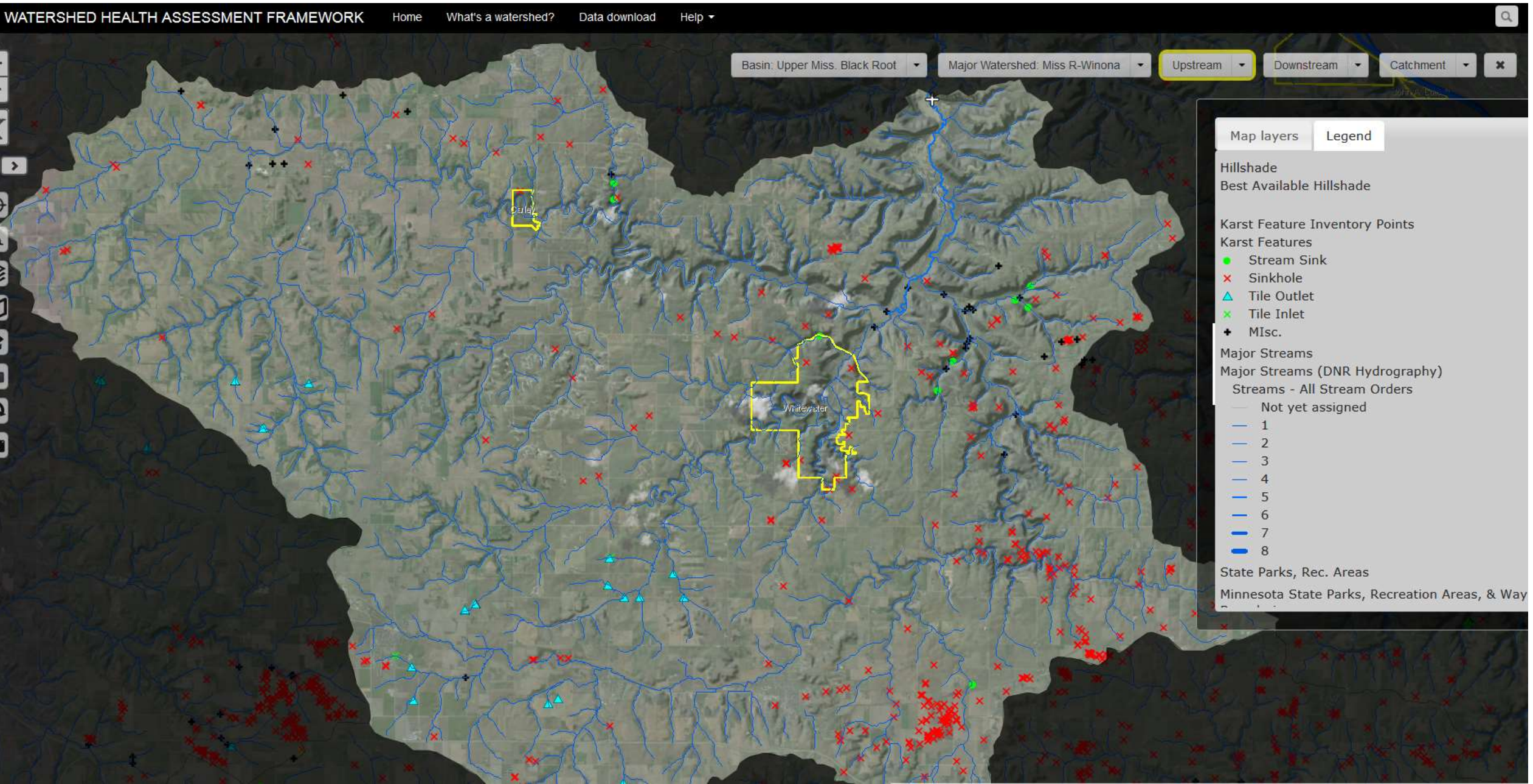
Altered Land: Impervious Cover

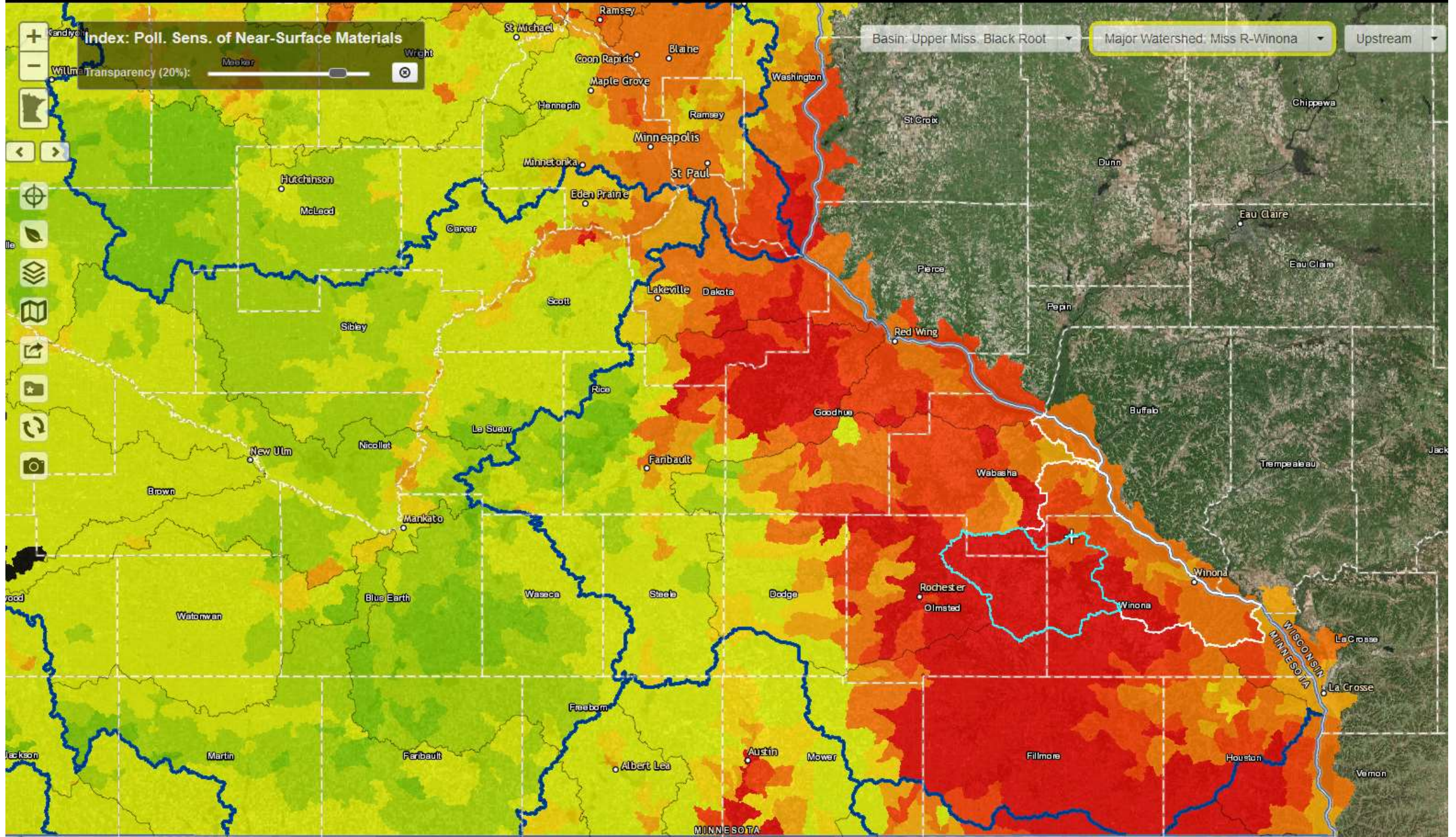


Aquatic Connectivity: Dams, bridges and culverts



Risk Factor: Karst Features in Upstream Watershed





How's the water?

